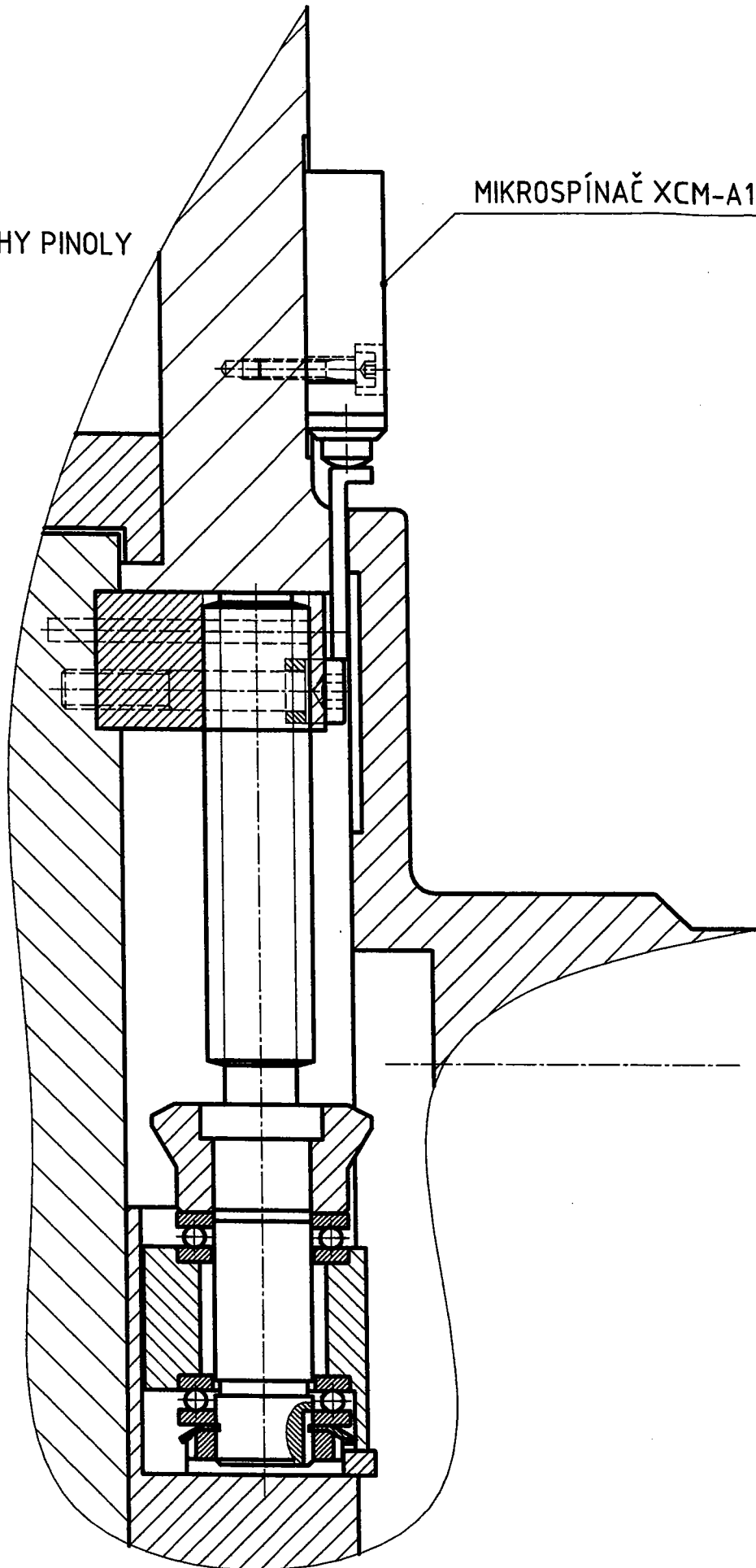
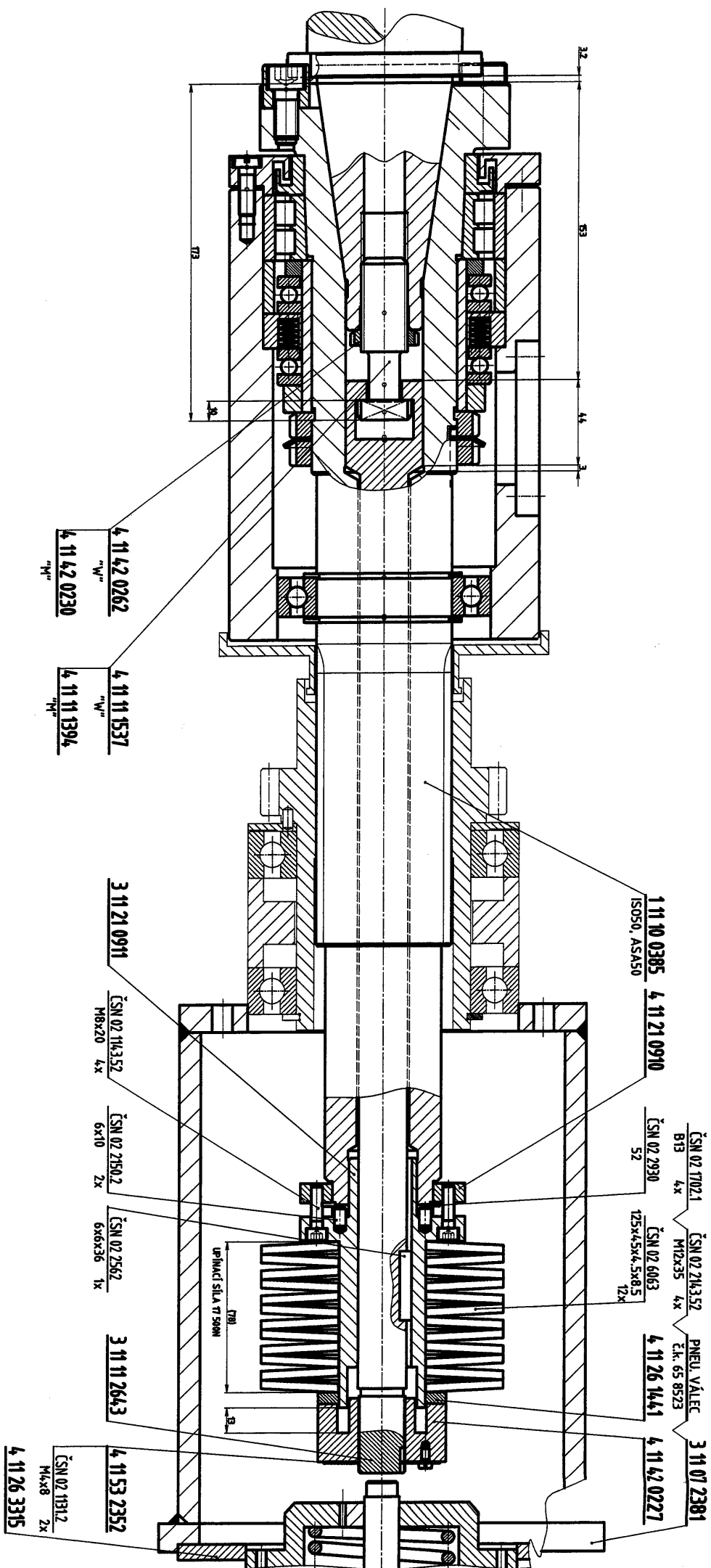


ŘEZ VÝSUVEM PINOLY
-SIGNALIZACE HORNÍ POLOHY PINOLY

MIKROSPÍNAČ XCM-A110



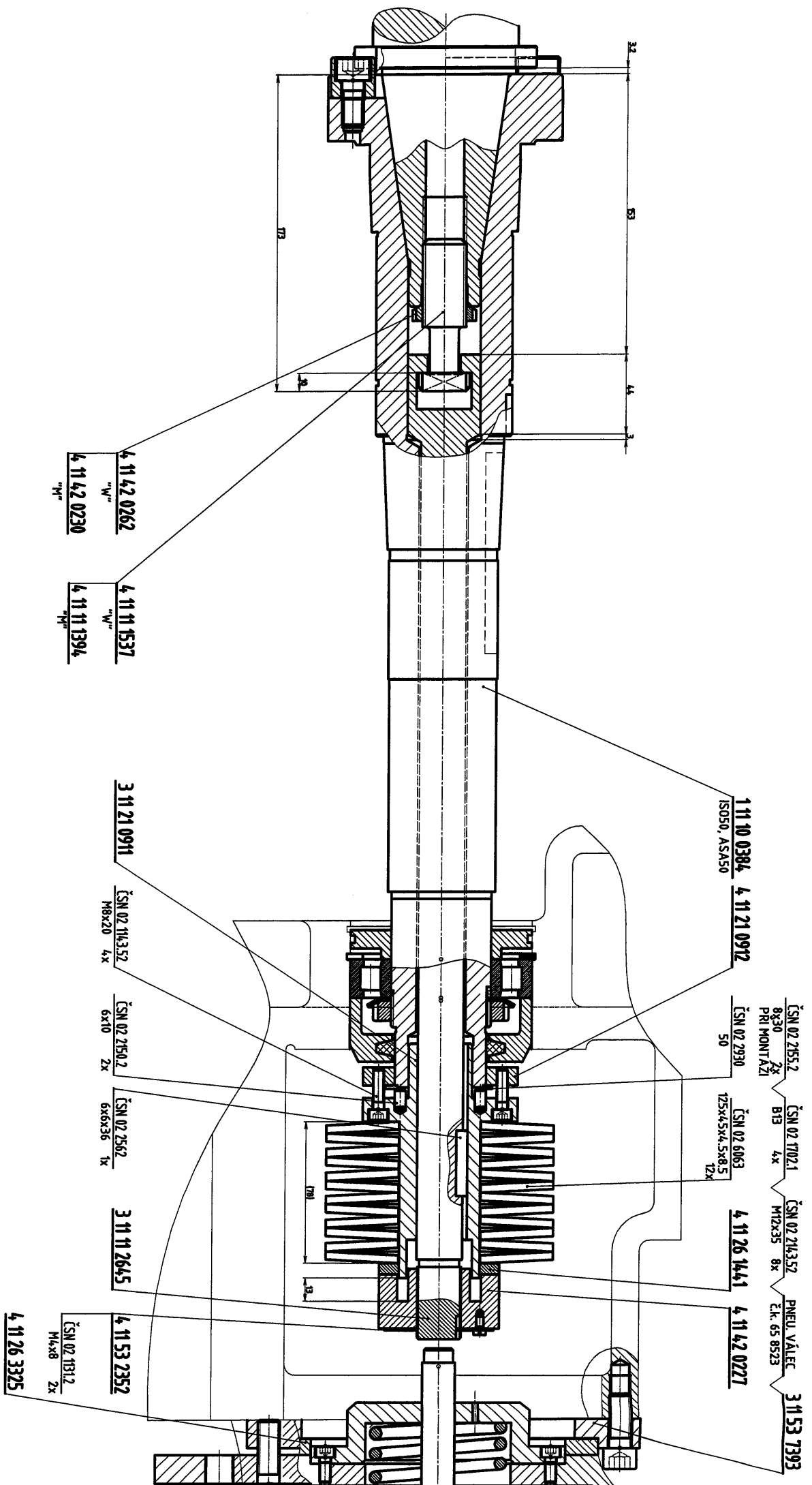


1 11 70 1610

II

FG32 V

P19.1



1 11 10 0384 4 11 21 0912
ISO50, ASA50

CSN 02 2155.2 8x30 2x
PRI MONTAZI
CSN 02 2930 50
CSN 02 6063 125x45x4.5x8.5 12x
4 11 26 1441 4 11 42 0227
CSN 02 1702.1 BT3 4x
CSN 02 2143.52 M12x35 8x
PNEU. VALTEC C.K. 65 8523 3 11 53 7393

4 11 42 0262 "W"
4 11 42 0230 "W"

4 11 11 1537 "W"
4 11 11 1394 "W"

3 11 21 0911

CSN 02 1163.52 M8x20 4x

CSN 02 2150.2 6x10 2x

CSN 02 2562 6x6x36 1x

3 11 11 2645

4 11 53 2352

CSN 02 1131.2 M4x8 2x
4 11 26 3325

1 11 70 1613